

# Transit

## Upfit Guide

---



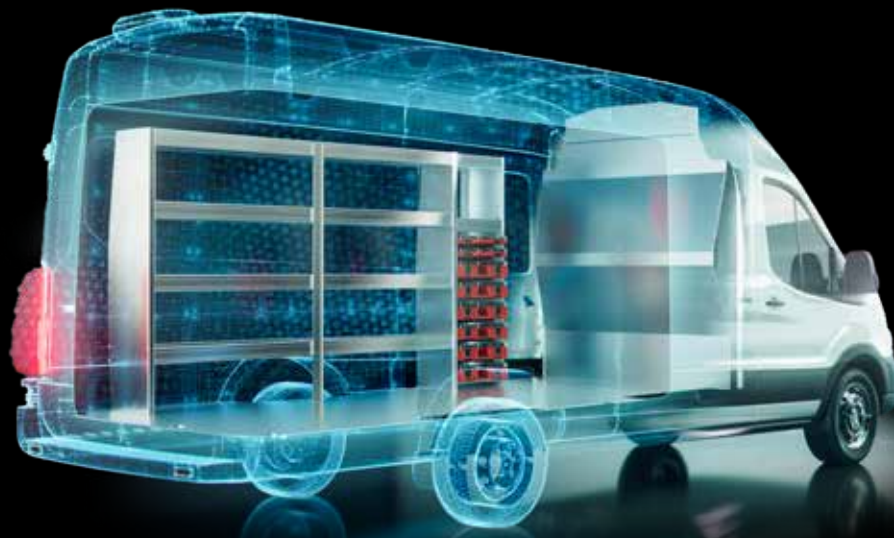
**NOW FEATURING**

**Packd** Products

**WORK VEHICLES  
THAT WORK BETTER!**

**advantage**  
**OUTFITTERS**

## What's the Advantage?



### We make it Easy

- Simplified layout and design process
- Technical support and configuration assistance

### We make it Fast

- Everything in this catalog is in stock
- Installs within 48 hours or less

### We make it Last

- Certified and trained Installers
- Lifetime Installation Warranty

## A simple 6 step process to an efficient work van

01. Start with **Interior Finishing**
02. Add a **Safety Partition**
03. Choose your **Shelving Package**
04. Add time-saving **Interior Accessories**
05. Select your **Roof Equipment**
06. Finish with **Exterior Accessories**

Advantage Outfitters is a commercial vehicle upfitter, specializing in storage equipment and accessories for cargo vans. With 20+ years of experience, we have earned the trust of contractors, trade fleets, utilities, municipalities, vehicle dealers, and leasing companies. We are defined by our strong team spirit and our passion for making work vehicles work better.



sales@advantageoutfitters.com

866.925.4844  
advantageoutfitters.com

## Contents

<b>Interior Finishing</b>	<b>04 - 07</b>
Wall Liners	04
Flooring	05
Lashing / Seat Covers / Window Grills	06
Interior Lighting	07
<b>Safety Partitions</b>	<b>08 - 09</b>
Straight Partitions	08
Contoured Partitions	09
<b>Shelving Packages</b>	<b>12 - 17</b>
Base	12
General Service	13
HVAC	14
Plumbing	15
Electrical	16
Delivery	17

<b>Interior Accessories</b>	<b>19-25</b>
Side-Door Drawer Systems	19
Parts Keepers	20-21
Drawer Cabinets	22
Shelving Accessories	23
Cab Accessories	24
Bottle Holders	25
<b>Roof Equipment</b>	<b>26 - 29</b>
Side Dropdown	26
Rear Dropdown	27
Roof Decks and Cargo Racks	28
Ladder Rack Accessories	29
<b>Exterior Accessories</b>	<b>30 - 31</b>
Running Boards / Rear Steps	30
Hitches / Windows / Locks	31
<b>Specialty Equipment</b>	<b>32-35</b>
Climate Control	32
Inverters	33
Liftgates	34
<b>Vehicle Layouts</b>	<b>35</b>

## VanLiner Wall and Door Protection

- 3/16" Rigid gray plastic with textured finish
- Protect your vehicle investment
- Highly durable & impact resistant



Model	Wall Panels Part#	Door Panels Part#	Model	Wall Panels Part#	Door Panels Part#
130" WB LR	601F11WL	601FX1DP	148" WB MR	601F22WL	601FX2DP
130" WB MR	601F12WL	601FX2DP	148" WB HR	601F23WL	601FX3DP
148" WB LR	601F21WL	601FX1DP	148" WB Ext HR	601F33WL	601FX3DP

## Duratherm Insulated Kits

- 1/4" Heavy duty rigid grey plastic wall protection with 1/8" foil/foam insulation layer
- Provides sound deadening and an R4 equivalent thermal barrier
- Textured surface is scratch and impact resistant



Model	Wall Liners Part#	Door Liners Part#	Ceiling Liners Part#
130" WB LR	654F11WL	654FX1DP	654F11CL
130" WB MR	654F12WL	654FX2DP	654F12CL
148" WB LR	654F21WL	654FX1DP	654F21CL
148" WB MR	654F22WL	654FX2DP	654F22CL
148" WB HR	654F23WL	654FX3DP	654F23CL
148" Ext WB HR	654F33WL	654FX3DP	654F33CL

## Floor Protection

### Rubber Mat

- 1/4" virgin rubber resists oils and chemicals
- Saves knees and increases traction
- One piece seamless



Model	Rubber Floor Mat Part#
130" WB	654F1XRM
148" WB	654F2XRM
148" WB Ext	654F3XRM
148" WB Ext Dual Rear Wheel	654F3XRMD

### StabiliGrip Floor

- 1/2" rubberized plastic with fiberglass reinforcement
- Provides firm base for tools and equipment
- Durable, non-skid surface



Model	StabiliGrip Floor Part#
130" WB	654F1XSG
148" WB	654F2XSG
148" WB Ext	654F3XSG
148" WB Ext Dual Rear Wheel	654F3XSGD

### Door Sills

- Custom fit, heavy-duty diamond plate aluminum sill plates
- Protects entry points and provides traction

Description	Part#
Rear & Side Sliding Door Sills	654FXRSS-D



Side Door Sill



Rear Door Sill

### Wheel Well Covers

- Decreases road noise and provides a thermal barrier.
- **Please Note:**  
\*Wheel Well Covers do not fit dual rear wheel vans

Description	Part#
Wheel Well Covers, set of 2	854FXWWC



INTERIOR FINISHING

INTERIOR FINISHING

## Aluminum Lashing Rail

- Durable & versatile
- Single level kits come with 5 movable tie-down rings
- Double level kits come with 10 movable tie-down rings
- Ratchet straps also available



Model	Single Level Part#	Double Level Part#
130" WB LR	842F1XLK	—
130" WB MR	842F1XLK	842F12LK2
148" WB LR	842F2XLK	—
148" WB MR/HR	842F2XLK	842F22LK2
148" WB Ext HR	842F33LK	842F33LK2
8' Ratchet Strap	842XX8RB	842XX8RB
6' Cam Buckle Strap	842XX6CB	842XX6CB

## Seat Covers

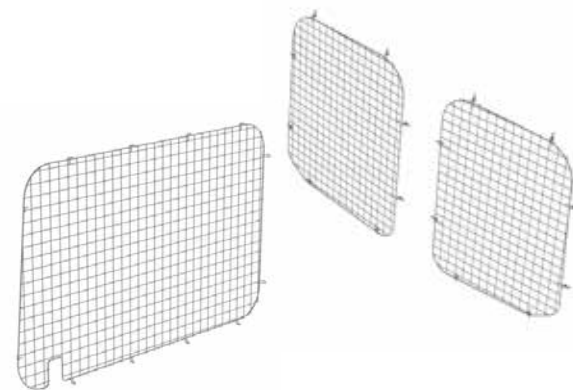
- Custom-fit
- Tough Cordura fabric
- Will not fit seats with thigh bolster



Description	Part#
Seat Covers (set of 2)	876FXSC

## Window Grills

- Black painted wire mesh construction



Description	Low Roof#	Medium / High Roof#
Set of (2) for Side Swing Doors	876FX1SW	-
Side Sliding Door	876FX1SG	876FX2SG
Set of (2) for Rear Doors	876FX1RG	876FX2RG

## Strip Lighting

- High intensity 2' LED light
- Mounts to side of ceiling ribs to maintain headroom
- Light is not compatible with ceiling liners
- Wired with OEM (door) switch
- 2 recommended for 130" & 148" WB vans
- 3 recommended for 148" Ext WB vans



Description	Part#
Single 2' LED light	452XXLD2

## Motion Sensor Lighting



- Motion sensor activated
- Recommended for install with Duratherm ceilings
- 2 recommended for 130" & 148" WB vans
- 3 recommended for 148" Ext WB vans

Description	Part#
1 LED light kit	454XXLK1
2 LED lights kit	454XXLK2
3 LED lights kit	454XXLK3
Bracket and hardware kit	454XXBH*

\* Required for vans without ceiling

## Our 6 Step Process

Start with <b>Interior Finishing</b> 01	Add a <b>Safety Partition</b> 02	Choose your <b>Shelving Package</b> 03
Add time-saving <b>Interior Accessories</b> 04	Select your <b>Roof Equipment</b> 05	Finish with <b>Exterior Accessories</b> 06

INTERIOR FINISHING

INTERIOR FINISHING

## Partitions Without Door

### Steel Partition

- Heavy gauge white powder-coated steel
- Includes hatch in bottom of center panel for long material
- Mesh upper on center & passenger side panels for increased visibility
- 4" setback for seat travel



Steel Partition Without Door

Aluminum Partition Without Door

### Aluminum Partition

- Lightweight & durable aluminum
- Rattle-free design
- 4" setback for seat travel
- Mesh upper on center panel

Description	Low Roof Part#	Medium Roof Part#	High Roof Part#
Steel Partition Without Door	287FX1SP	287FX2SP	287FX3SP
Aluminum Partition Without Door	P40-FTL	P40-FTM	P40-FTH

## Composite Partitions

- One-piece design
- Innovative design maximizes both driver comfort and storage space
- Perfect fit provides improved climate control and noise reduction
- Available with or without polycarbonate window (for the straight composite option)



Contoured Composite

Straight Composite (with and without window)

Description	Low Roof Part#	Medium Roof Part#	High Roof Part#
Contoured Composite Partition	-	P60-FTM	P60-FTH
Straight Composite Partition	187FX1CP	187FX2CP	187FX3CP
Straight Composite Partition With Window	187FX1CPW	187FX2CPW	187FX3CPW

## Partitions With Door

### Steel Partition with Door

- Heavy gauge white powder-coated steel
- Includes hatch in bottom of center panel for long material
- Mesh upper on center & passenger side panels for increased visibility
- 4" setback for seat travel
- Includes hinged locking door for access to cargo area



Steel Partition With Door

Aluminum Partition With Door

### Aluminum Partition with Door

- Lightweight & durable aluminum
- Rattle-free design
- Mesh upper on center panel
- 4" setback for seat travel
- Includes hinged latching door for access to cargo area

Description	Low Roof Part#	Medium Roof Part#	High Roof Part#
Steel Partition With Door	287FX1HDP	287FX2HDP	287FX3HDP
Aluminum Partition With Door	P50-FTL	P50-FTM	P50-FTH

## Contoured Aluminum Partitions

- Lightweight & durable aluminum
- Rattle-free design
- Maximize seatback travel while increasing cargo floor area
- Available with or without window for visibility



Contoured Solid Partition

Contoured Partition with Window

Description	Low Roof Part#	Medium Roof Part#	High Roof Part#
Solid Aluminum Contoured Partition	P10-FTL	P10-FTM	P10-FTH
Contoured Aluminum Partition With Window	P11-FTL	P11-FTM	P11-FTH

# Increase your productivity with our Trade-Specific Packages



## What's the Packd Advantage?

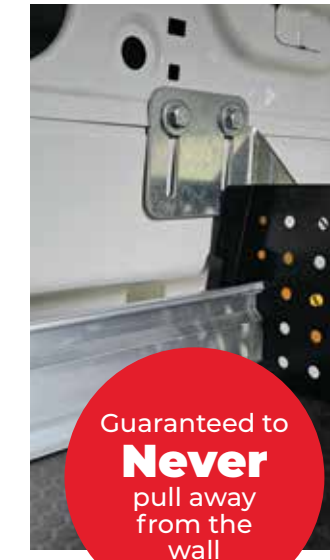
Packd

### Durable



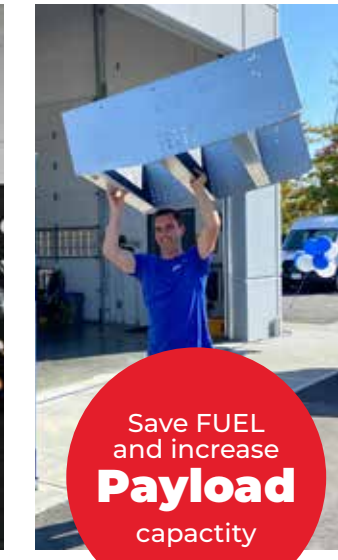
Load tested to **1200 lbs** per shelf

### Secure



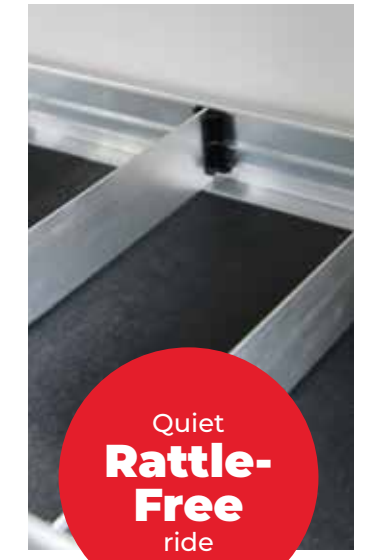
Guaranteed to **Never** pull away from the wall

### Lightweight



Save **FUEL** and increase **Payload** capacity

### Quiet



Quiet **Rattle-Free** ride

## Here's what our customers say about their upfitted vans

"My technicians are able to keep the vans organized, which increases our overall efficiency."

Mike S.  
HVAC Service Company.



"You really helped us get the maximum benefit out of our vehicles."

Michael R.  
Fire Protection Company.



## Our 6 Step Process

Start with Interior Finishing 01

Add a Safety Partition 02

Choose your Shelving Package 03

Add time-saving Interior Accessories 04

Select your Roof Equipment 05

Finish with Exterior Accessories 06

## Base Package – Low Roof

### Choose your partition

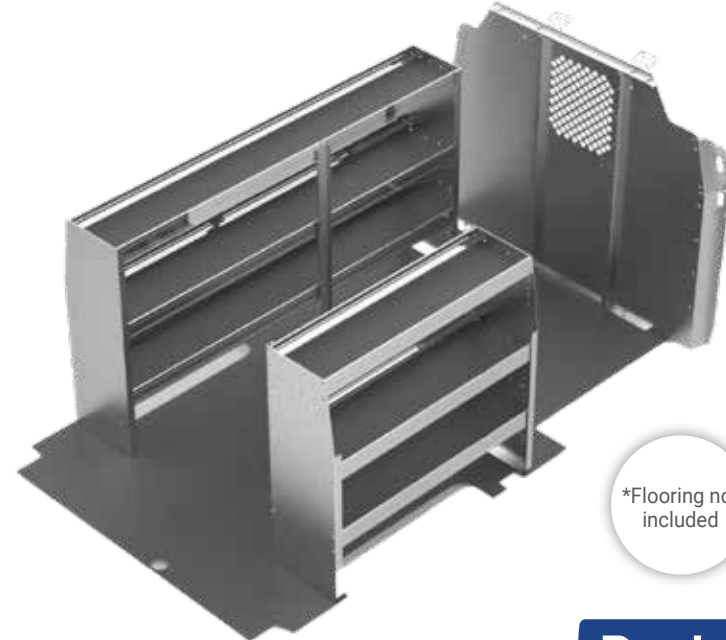
- Straight Partition
- Swing Door Partition
- No Partition

### Driver's side includes:

- (1) Aluminum 45"H x 84"L 3-shelf shelving unit

### Passenger's side includes:

- (1) Aluminum 45"H x 48"L 3-shelf shelving unit



\*Flooring not included

**Packd**

NOTE 96' driver's side shelving unit option available for 148" wheelbase models

Model	Package with Straight Partition #	Package with Swing Door Partition #	Package with No Partition #
Low Roof Base Package, all wheelbases	175FX1BP	175FX1BPD	175FX1BPX

## General Service Package – Low Roof

### Choose your partition

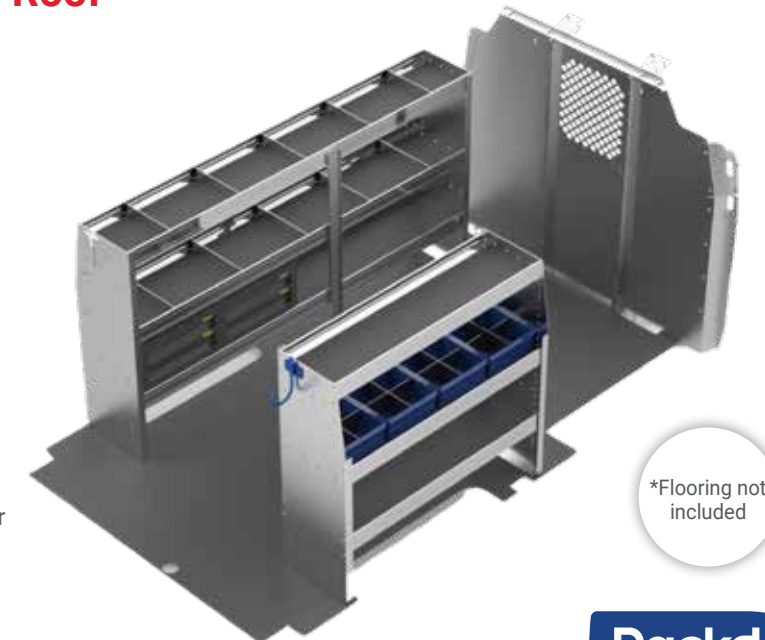
- Straight Partition
- Swing Door Partition
- No Partition

### Driver's side includes:

- (1) Aluminum 45"H x 84"L 3-shelf shelving unit
- (10) Aluminum rattle-free dividers
- (2) 18.5"W x 10.5"H 2 drawer cabinets
- (1) Fixed Hook

### Passenger's side includes:

- (1) Aluminum 45"H x 48"L 3-shelf shelving unit
- (4) 12"D plastic bins with center divider & cross divider
- (1) 8" swivel hook (4" opening)



\*Flooring not included

**Packd**

NOTE 96' driver's side shelving unit option available for 148" wheelbase models

Model	Package with Straight Partition #	Package with Swing Door Partition #	Package with No Partition #
Low Roof General Service Package, all wheelbases	175FX1GSP	175FX1GSPD	175FX1GSPX

## Base Package – Medium/High Roof

### Choose your partition

- Straight Partition
- Swing Door Partition
- No Partition

### Driver's side includes:

- (1) Aluminum 62"H x 96"L 4-shelf shelving unit

### Passenger's side includes:

- (1) Aluminum 62"H x 48"L 4-shelf shelving unit



\*Flooring not included

**Packd**

Model	Package with Straight Partition #	Package with Swing Door Partition #	Package with No Partition #
Medium Roof Base Package, all wheelbases	175FX2BP	175FX2BPD	175FX2BPX
High Roof Base Package, all wheelbases	175FX3BP	175FX3BPD	175FX3BPX

## General Service Package – Medium/High Roof

### Choose your partition

- Straight Partition
- Swing Door Partition
- No Partition

### Driver's side includes:

- (1) Aluminum 62"H x 96"L 4-shelf shelving unit
- (10) Aluminum rattle-free dividers
- (2) 18.5"W x 10.5"H 2 drawer cabinets
- (1) Fixed Hook

### Passenger's side includes:

- (1) Aluminum 62"H x 48"L 4-shelf shelving unit
- (4) 12"D plastic bins with center divider & cross divider
- (1) 8" swivel hook (4" opening)

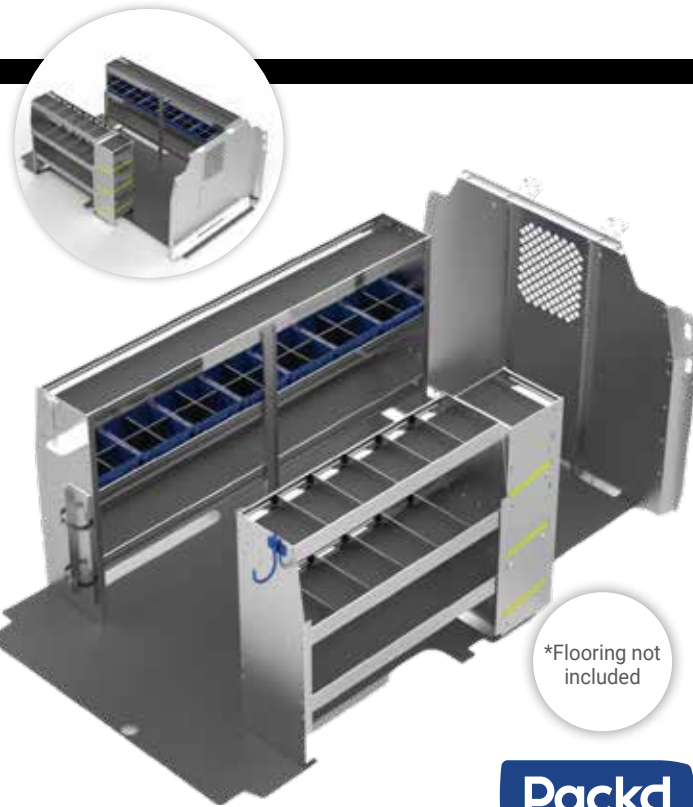


\*Flooring not included

**Packd**

Model	Package with Straight Partition #	Package with Swing Door Partition #	Package with No Partition #
Medium Roof General Service Package, all wheelbases	175FX2GSP	175FX2GSPD	175FX2GSPX
High Roof General Service Package, all wheelbases	175FX3GSP	175FX3GSPD	175FX3GSPX

## HVAC Package - Low Roof



\*Flooring not included

**Packd**

### Choose your partition

- Straight Partition
- Swing Door Partition
- No Partition

### Driver's side includes:

- (1) Aluminum 45"H x 84"L 3-shelf shelving unit
- (7) 14"D plastic bins with center divider & cross divider
- (1) Large bottle holder
- (1) Fixed Hook

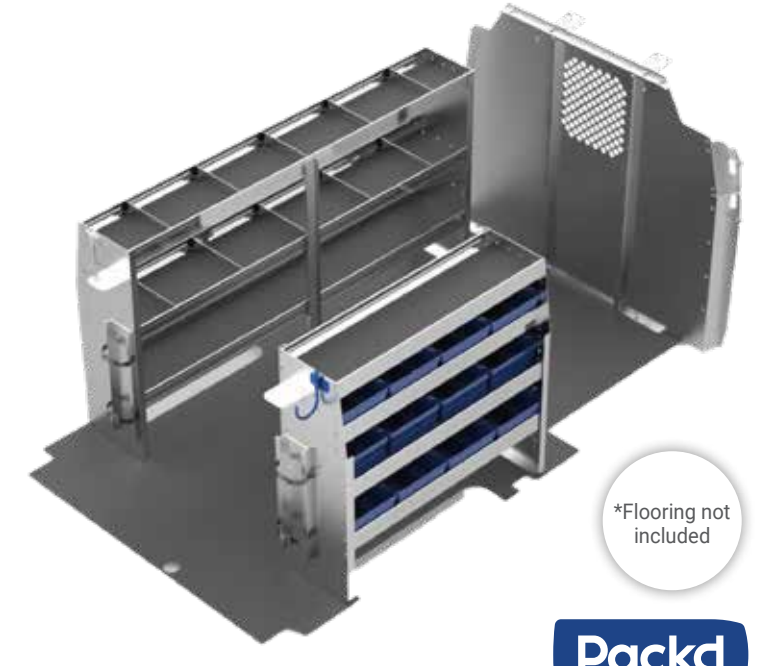
### Passenger's side includes:

- (1) Aluminum 45"H x 48"L 3-shelf shelving unit
- (1) 3 level refrigerant rack
- (10) aluminum rattle-free dividers
- (1) 8" swivel hook

**NOTE** 96' driver's side shelving unit option available for 148" wheelbase models

Model	Package with Straight Partition #	Package with Swing Door Partition #	Package with No Partition #
Low Roof HVAC Package, all wheelbases	175FX1HP	175FX1HPD	175FX1HPX

## Plumbing Package - Low Roof



\*Flooring not included

**Packd**

### Choose your partition

- Straight Partition
- Swing Door Partition
- No Partition

### Driver's side includes:

- (1) Aluminum 45"H x 84"L 3-shelf shelving unit
- (10) Aluminum rattle-free dividers
- (1) Large bottle holder
- (1) Fixed Hook

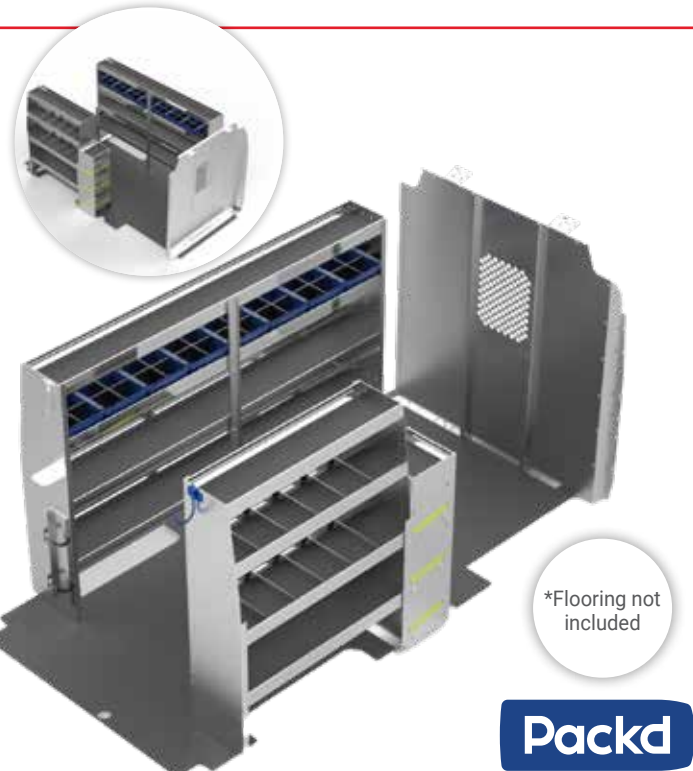
### Passenger's side includes:

- (1) Aluminum 45"H x 48"L 4-shelf shelving unit
- (8) 14"D Plastic bins with center divider & cross divider
- (4) 12"D Plastic bins with center divider & cross divider
- (1) Large bottle holder
- (1) 8" swivel hook (4" opening)

**NOTE** 96' driver's side shelving unit option available for 148" wheelbase models

Model	Package with Straight Partition #	Package with Swing Door Partition #	Package with No Partition #
Low Roof Plumbing Package, all wheelbases	175FX1PP	175FX1PPD	175FX1PPX

## HVAC Package - Medium/High Roof



\*Flooring not included

**Packd**

### Choose your partition

- Straight Partition
- Swing Door Partition
- No Partition

### Driver's side includes:

- (1) Aluminum 62"H x 96"L 4-shelf shelving unit
- (8) 12"D plastic bins with center divider & cross divider
- (1) Large bottle holder
- (1) Fixed Hook

### Passenger's side includes:

- (1) Aluminum 62"H x 48"L 4-shelf shelving unit
- (1) 3 level refrigerant rack
- (10) aluminum rattle-free dividers
- (1) 8" swivel hook (4" opening)

Model	Package with Straight Partition #	Package with Swing Door Partition #	Package with No Partition #
Medium Roof HVAC Package, all wheelbases	175FX2HP	175FX2HPD	175FX2HPX
High Roof HVAC Package, all wheelbases	175FX3HP	175FX3HPD	175FX3HPX

## Plumbing Package - Medium/High Roof



\*Flooring not included

**Packd**

### Choose your partition

- Straight Partition
- Swing Door Partition
- No Partition

### Driver's side includes:

- (1) Aluminum 62"H x 96"L 4-shelf shelving unit
- (10) Aluminum rattle-free dividers
- (1) Large bottle holder
- (1) Fixed Hook

### Passenger's side includes:

- (1) Aluminum 62"H x 48"L 5-shelf shelving unit
- (8) 14"D plastic bins with center divider & cross divider
- (8) 12"D plastic bins with center divider & cross divider
- (1) Large bottle holder
- (1) 8" swivel hook (4" opening)

Model	Package with Straight Partition #	Package with Swing Door Partition #	Package with No Partition #
Medium Roof Plumbing Package, all wheelbases	175FX2PP	175FX2PPD	175FX2PPX
High Roof Plumbing Package, all wheelbases	175FX3PP	175FX3PPD	175FX3PPX

## Electrical Package - Low Roof

### Choose your partition

- Straight Partition
- Swing Door Partition
- No Partition

### Driver's side includes:

- (1) Aluminum 45"H x 84"L 3-shelf shelving unit
- (7) 12"D plastic bins with center divider & cross divider
- (1) 11"H x 33"L locking door cabinet
- (1) 11"H x 45"L locking door cabinet
- (1) Fixed Hook

### Passenger's side includes:

- (1) Aluminum 45"H x 48"L 3-shelf shelving unit
- (10) Aluminum rattle-free dividers



\*Flooring not included

**Packd**

**NOTE** 96" driver's side shelving unit option available for 148" wheelbase models

Model	Package with Straight Partition #	Package with Swing Door Partition #	Package with No Partition #
Low Roof Electrical Package, all wheelbases	175FX1EP	175FX1EPD	175FX1EPX

## Electrical Package - Medium/High Roof

### Choose your partition

- Straight Partition
- Swing Door Partition
- No Partition

### Driver's side includes:

- (1) Aluminum 45"H x 84"L 4-shelf shelving unit
- (8) 12"D plastic bins with center divider & cross divider
- (2) 11"H x 45"L locking door cabinet
- (1) Wire reel holder
- (1) Fixed Hook

### Passenger's side includes:

- (1) Aluminum 62"H x 48"L 4-shelf shelving unit
- (10) Aluminum rattle-free dividers
- (1) 8" swivel hook (4" opening)



\*Flooring not included

**Packd**

Model	Package with Straight Partition #	Package with Swing Door Partition #	Package with No Partition #
Medium Roof Electrical Package, all wheelbases	175FX2EP	175FX2EPD	175FX2EPX
High Roof Electrical Package, all wheelbases	175FX3EP	175FX3EPD	175FX3EPX

## Delivery Package – Medium/High

### Choose your partition

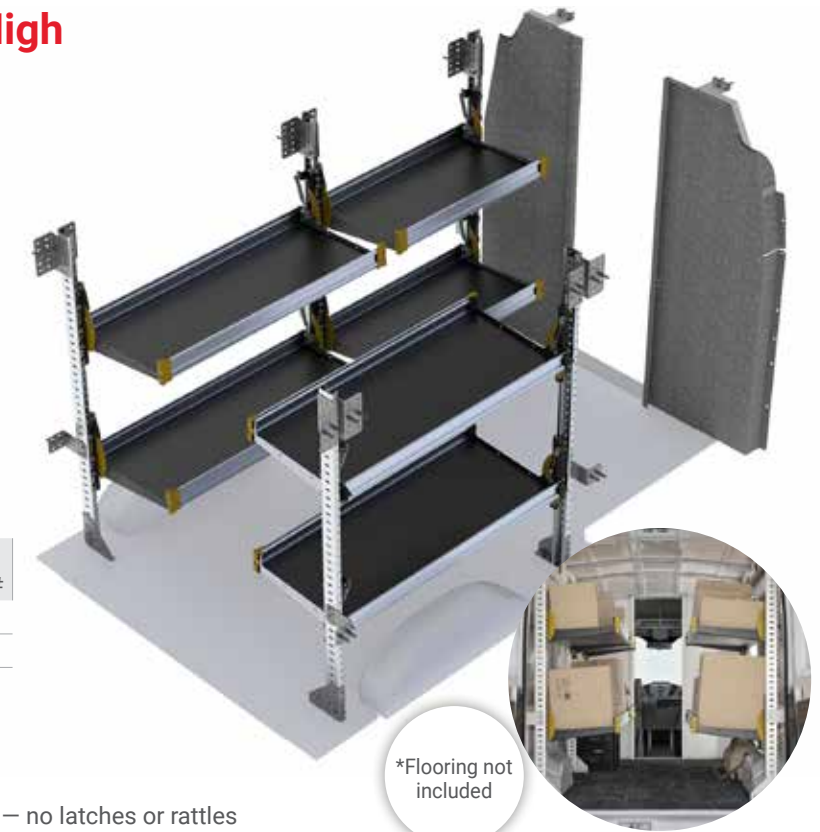
- Straight Partition
- Swing Door Partition
- No Partition

### Driver's side includes:

- (1) 48"H x 72"L - 2 shelf unit with folding shelves

### Passenger's side includes:

- (1) 48"H x 48"L - 2 shelf unit with folding shelves



\*Flooring not included

Model	Pass Thru Partition#
Medium Roof Delivery Package, all wheelbases	176FX2DP
High Roof Delivery Package, all wheelbases	176FX3DP

- Folding shelves keep aisle clear when not in use
- Capacity is 250 lbs per shelving unit
- Shelves are 20" deep
- Gas shock holds shelf in either up or down position – no latches or rattles

**DO YOU HAVE A FLEET OF 10+ VANS?**

Contact us to learn about our fleet upfit solutions



Switching your fleet to **E-Transits?**

We can help make the transition easy while maximizing your range

## Organized Time Saver

Access your most common items without even entering your vehicle.

### Build a drawer system that works best for you

01. Start with a **Tool Drawer** for power tools and bags
02. Add **Parts Drawers** for hand tools and components
03. Finish with a **Top Tray** and crates or a **Worktop** surface



## Our 6 Step Process

Start with Interior Finishing 01	Add a Safety Partition 02	Choose your Shelving Package 03
Add time-saving Interior Accessories 04	Select your Roof Equipment 05	Finish with Exterior Accessories 06

### Tool Drawer

- Aluminum
- Weight capacity: 320 lbs
- Includes 3 large dividers
- Gray powder-coated drawer face
- 17"W x 45"L x 19.5"H
- Lockable



Description	Part#
Tool Drawer	DR10

### Parts Drawer

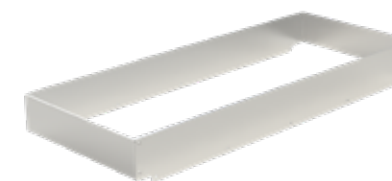
- Aluminum
- Weight capacity: 150 lbs
- Drawer has paddle latch
- Gray powder-coated drawer face
- 12.5"W x 45"L x 7.5"H
- Lockable
- Mount individually, on top of tool drawer, or on top of other parts drawers



Description	Part#
Parts Drawer	DR11

### Tool Drawer Top Tray

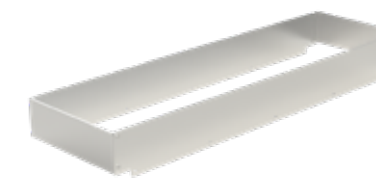
- Turn your tool drawer top into an additional storage area
- 17"W x 45"L x 4"H



Description	Part#
Top Tray for Tool Drawer	TE10

### Parts Drawer Top Tray

- Turn your parts drawer top into an additional storage area
- 12.5"W x 45"L x 4"H



Description	Part#
Top Tray for Parts Drawer	TE11

## Stackable Space Saving Storage

Mix and match to meet your needs



### Add a Worktop to Your Drawer System

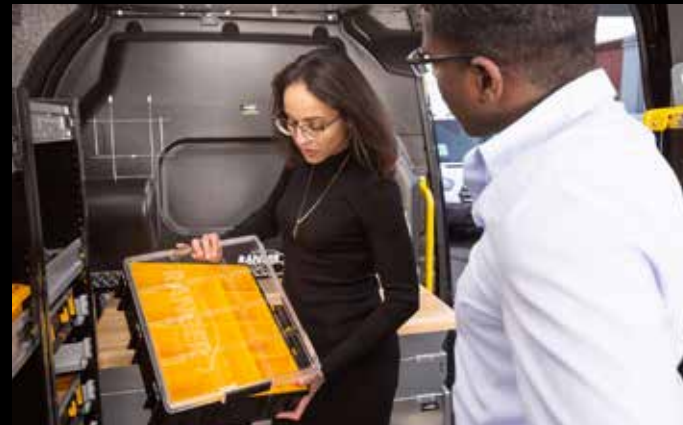
- 18"D x 48"W hardwood butcher block top
- Mounts to top of drawer system



Description	Part#
Drawer System Worktop	176XWT

## Maximize your Productivity!

Bring all of your small parts in one trip



## Incorporate time saving Parts Keepers into your upfit:

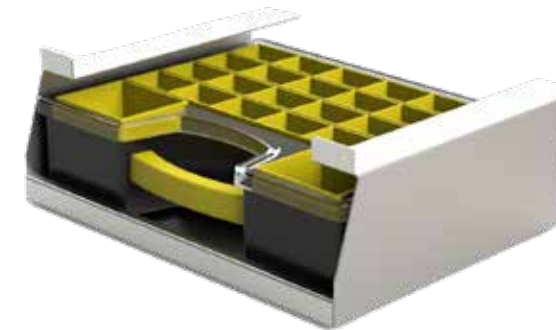
- 1) Add single Parts Keeper units onto your shelves
- 2) Mount a Parts Keeper cabinet at your side door for easy access



**Be Efficient!** Saving just 5 minutes per day will gain you 21 hours per year!

### Single Parts Keeper

- Hangs underneath any shelf



Description	Part#
Parts Keeper Case	PK-1

### 4 Pc. Parts Keeper Cabinet

- 1 Shelf
- Aluminum
- 13.5"W x 17"L x 24"H



Description	Part#
4 Pc. Parts Keeper	PK-4-1

### 5 Pc. Parts Keeper Cabinet

- 2 Shelves
- Aluminum
- 13.5"W x 17"L x 45"H



Description	Part#
5 Pc. Parts Keeper	PK-5-2

### 8 Pc. Parts Keeper Cabinet

- 1 Shelf
- Aluminum
- 13.5"W x 17"L x 45"H



Description	Part#
8 Pc. Parts Keeper	PK-8-1

### 8 Pc. Parts Keeper Cabinet

- 2 Shelves
- Aluminum
- 13.5"W x 17"L x 62"H



Description	Part#
8 Pc. Parts Keeper with 2 Shelves	PK-8-2

## 2-Drawer & 3-Drawer Cabinets:

- Latching drawers with ball bearing slides
- Includes key lock for security
- Cabinets can be individually mounted to shelves or stacked on floor
- 12.5"D x 18.5"W x 10.5"H

## 9-Drawer Cabinet:

- Rattle-free plastic drawers with dividers
- Includes built-in drawer catch
- 12.5"D x 17"W x 12"H



Contractor Approved

The drawers are super smooth and I couldn't be happier with them. High quality item. **99**

Leslie N.

## 2-Drawer Cabinet



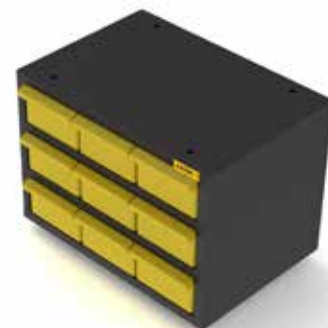
Description	Part#
2-Drawer Cabinet	876XX2DC

## 3-Drawer Cabinet



Description	Part#
3-Drawer Cabinet	876XX3DC

## 9-Drawer Cabinet



Description	Part#
9-Drawer Cabinet	876XX9DC

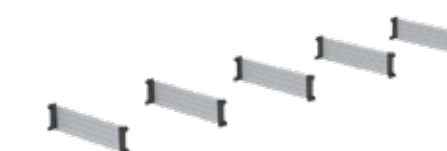
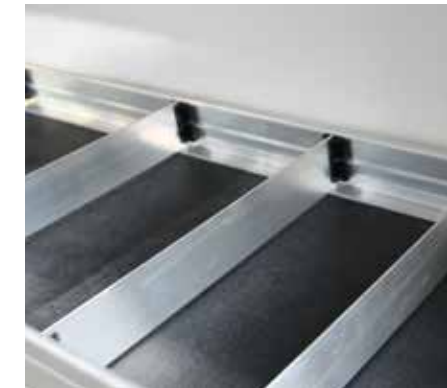
## Locking Door



Description	Part#
45"W x 10"H Locking Door (5 hole spacing for 48"W shelving unit)	SD1045
45"W x 11.5"H Locking Door (6 hole spacing for 48"W shelving unit)	SD1145*
45"W x 13"H Locking Door (7 hole spacing for 48"W shelving unit)	SD1345

\*Default size/shelf spacing

## Dividers (Pack of 5)



Description	Part#
11" Aluminum Shelf Dividers	CDS-11
12" Aluminum Shelf Dividers	CDS-12
14" Aluminum Shelf Dividers	CDS-14

## Bins



Includes a center & cross divider



Description	Part#
11"D Plastic Bin	PBS-11
12"D Plastic Bin	PBS-12
14"D Plastic Bin	PBS-14

## Moveable Hooks

- Use two Large Moveable Hooks to hang ladder from shelving
- Clips to shelving lip



Description	Part#
Small Moveable Hook	AC74
Large Moveable Hook	AC73

## Swivel Hook

- Powder-coated blue finish



Description	Part#
Swivel Hook	AC72

## Fixed Hook



Description	Part#
Fixed Hook (3" opening)	AC70
Large Fixed Hook (4" opening)	AC71

INTERIOR ACCESSORIES

INTERIOR ACCESSORIES

## Cab Organizer Box



Description	Part#
Locking Aluminum Cab Box Organizer with Raise	876DXCB

## Paper Holders



Description	Part#
Aluminum 3-Slot Paper Holder	AC10
Aluminum 5-Slot Paper Holder	AC14

## First-Aid Kit



Description	Part#
First-Aid Kit With Holder	864XXFA

## Triangle Kit



Description	Part#
Triangle Kit	876XXTK

## Hard Hat Holder



Description	Part#
Hard Hat Holder	876XXHH

## Grab Handle

- High grip surface
- Increase safety and efficiency



Description	Part#
Grab Handle	876XXGH

## Small Bottle Holder

- For MC tanks



Description	Part#
Small Bottle Holder	RS86

## Large Bottle Holder

- For B tanks and nitrogen tanks



Description	Part#
Large Bottle Holder	RS88

## Refrigerant Rack Two Level

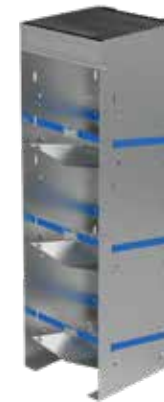
- For refrigerant tanks
- Keeps tanks vertical



Description	Part#
Two Level Adjustable Bottle Holder	RS10

## Refrigerant Rack Three Level

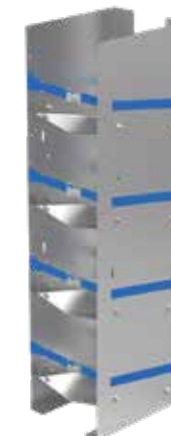
- For 30lb & 50lb refrigerant racks
- 13"W x 45"H



Description	Part#
Large Aluminum 3 Tier Refrigerant Rack	RS-3L-1

## Refrigerant Rack Four Level

- For 30lb refrigerant tanks
- 10.5"W x 45"H



Description	Part#
Small Aluminum 4 Tier Refrigerant Rack	RS-4S

## Refrigerant Rack Five Level

- For 30lb & 50lb refrigerant tanks
- 13"W x 62"H



Description	Part#
Large Aluminum 5 Tier Refrigerant Rack	RS-5L-1

INTERIOR ACCESSORIES

INTERIOR ACCESSORIES

# Side Dropdown Ladder Rack

# Rear Dropdown Ladder Rack

## MaxRack



Single Side Drop Down



Double Side Drop Down



- All aluminum construction
- Removable rotation bar included

Description	130"WB LR Part#	148"WB LR Part#	148"WB MR/HR Part#
Single Side MaxRack, holds (1) extension ladder (up to 32'L) or 10' stepladder	376F11SR	376F21SR	376F2XSR
Double Side MaxRack, holds (2) extension ladders (up to 32'L) or 10' stepladders	376F11DR	376F21DR	376F2XDR
Double Side MaxRack with 3rd Crossbar, holds (1) extension ladder (up to 32'L) and (1) 8' Stepladder	376F11DR3	376F21DR3	376F2XDR3
Optional Crossbow End Stops (add to Single Side MaxRack for additional roof storage capacity on Driver's Side)	376XXCES	376XXCES	376XXCES

## ErgoRack



Single-Side Drop Down



Double-Side Drop Down

- Aluminum and steel construction
- Removable rotation bar included

Description	Low Roof, all wheelbases	Medium/High Roof, all wheelbases
Single Side ErgoRack, holds (1) extension ladder (up to 36'L) or 10' stepladder	374FX1SR	374FX2SR
Double Side ErgoRack, holds (2) extension ladders (up to 36'L) or 10' stepladders	374FX1DR	374FX2DR
Double Side ErgoRack with 3rd Crossbar, holds (1) extension ladder (up to 36'L) and (1) Stepladder (6' - 8'L)	374FX1DR3	374FX2DR3

## Access Stow

- Rust-free aluminum and stainless construction
- Fast, easy operation
- Ergonomic and safe rear deployment
- Works for extension ladders up to 32' or step ladders up to 10'

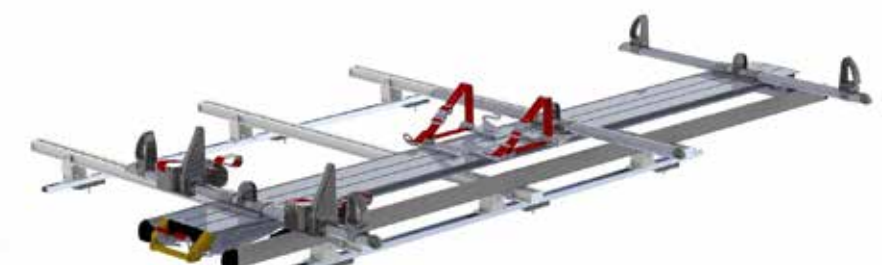
Description	Single Ladder Part#	Double Ladder Part#
Access Stow for 130" Transit	376F1XSS	376F1XDS
Access Stow for 148" and 148" Ext Transit	376F2XSS	376F2XDS



Single Access Stow



Double Access Stow



## Our 6 Step Process

Start with Interior Finishing 01	Add a Safety Partition 02	Choose your Shelving Package 03
Add time-saving Interior Accessories 04	Select your Roof Equipment 05	Finish with Exterior Accessories 06



## Roof Decks

- Heavy duty anodized aluminum construction
- Aerodynamically designed
- Includes rear roller
- Optional ratchet tie downs to secure any type of load



Model	Part#
130" WB LR	376F11RD
130" WB MR	376F12RD
148" WB LR	376F21RD
148" WB MR/HR	376F22RD
148" WB Ext HR	376F33RD

## Cargo Racks

- Rust-free aluminum construction
- Includes ladder stops & straps
- Optional rear roller to aid in loading and protect brake lights



\*optional rear roller bar

Model	Part#
2 Bar Rack	395FX2B
3 Bar Rack	395FX3B
Rear Roller	395FXRR
Rear Roller MR/HR	395FXRRH



## Access Ladders



Bolt-on

- Heavy duty extruded aluminum
- Contoured to fit Transit
- White bolt-on ladder recommended for cargo racks
- Anodized clamp-on ladder recommended for roof decks



Clamp-on

Roof	Bolt-on Part#	Clamp-on Part#
Low Roof	795X0ALW	774FX1AL
Mid Roof	795X1ALW	774FX2AL
High Roof	795X2ALW	774FX3AL

## Conduit Carrier

- 5" square rigid one piece design
- White powder-coated aluminum with black end caps
- Inside length of 10' 8"
- Lockable
- Add to any ladder rack



Description	Part#
Conduit Carrier	774XXCT

## Ratchet Tie-Downs

- Recommended two per side
- Safely secure any type of load



Model	Part#
Set of 2 for Roof Decks	376XXRTD
Set of 2 for Cargo Racks	795XXRTH1S

## Grip Step Running Boards

- 7" wide stepping surface
- Black powder coat aluminum
- Open tread design for maximum grip
- 98" passenger's board and 36" drivers board



Description	Part#
Running Boards (Driver's side and passenger's side set)	760FXRB

\*Not suitable for an E-Transit Model

## Grip Step Rear Step

- Black powder-coated aluminum
- 7" wide stepping surface
- High traction open tread design

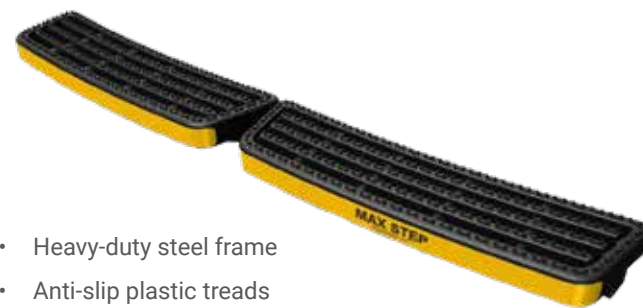


Description	Part#
Grip Step Rear Step	760FXBAS

\* Rear steps not compatible with a hitch

## Max Step Rear Step

- Heavy-duty steel frame
- Anti-slip plastic treads
- Reflective strip



Description	Part#
Max Rear Step	776FXBAS

\* Rear steps not compatible with a hitch

## Tow Hitches

- Class III (500 lb tongue weight, 5000 lb trailer weight)
- Class III (2 inch receiver)



Description	Part#
Class III Hitch (900 lb tongue weight, 6000 lb trailer weight)*	706FXTH3
4-Way Flat Wiring Kit	506FX4TC
Duplex 7-way/4-way Wiring Kit**	506FX7TC
Digital Brake Controller	506XXTBC

\* Not compatible with dual rear wheel transits.  
 \*\* WARNING: Requires a Digital Brake Controller to enable trailer brakes.

## Windows

- OEM fit
- Light smoke tint
- Only available for MR/HR vans



Description	Part#
Rear LH & RH	743FXRW
Driver's Side Forward	743FXDSFW
Sliding Door	743FXSDW
Porthole	732XXPW

## Slick Locks

- High security hasps use factory mounting points
- Solid steel "puck" style locks included
- Custom fit for drill-free installation



Description	Part#
Set of 2 Slick Locks for Transit with Sliding Side Door	788FXSLS
Set of 2 Slick Locks for Transit with Swing Side Door	788FXSLH

EXTERIOR ACCESSORIES

EXTERIOR ACCESSORIES

## HVAC Tie-In System

- Engine-driven system designed for generally moderate climates
  - Achieve an indoor temperature approximate 12-15 degrees below the maximum outside temperature
  - Adds a high-capacity evaporator in the cargo area
  - Ties in to vehicle's existing OEM compressor and condenser
  - Connects into vehicle's existing coolant lines for heat function
- Application Example:**
- Art Transport
  - Mobile Showrooms



**NOTE.**  
Products shown on this page are not available for onsite install

Description	Part#
Tie-In HVAC System	997XXTI

## HVAC Extreme Climate System

- Engine-driven system designed for the most demanding HVAC requirements
  - Achieve an indoor temperature of up to 30 degrees below the maximum outdoor temperature
  - Adds a high-capacity evaporator in the cargo area
  - Adds a powerful auxiliary compressor in the engine compartment
  - Adds an additional condenser (either rooftop mount or underbody options)
  - Connects into vehicle's existing coolant lines for heat function
- Application Example:**
- Animal Transport
  - Mobile Labs



Description	Part#
HVAC Extreme Climate System	Call for details

## Fuel-fired Heaters

- High-performance combustion heater for safe, reliable heat
  - Powered through the vehicles existing fuel tank
  - Gas and diesel options
  - Pair with our auxiliary battery/charging system for vehicle-off operation
  - Compact design mounts almost anywhere on the floor
  - Uses as little as 1 gallon of fuel per 22 hour period
  - Up to 7,000 BTU/h heat output
- Application Example:**
- Carpet Cleaners
  - Mobile Pressure-Washers



Description	Part#
Fuel-Fired Heater, gas engines, with Standard Controller	997XXGSC
Fuel-Fired Heater, gas engines, with Programmable Controller	997XXPSC
Fuel-Fired Heater, diesel engines, with Standard Controller	997XXDSC
Fuel-Fired Heater, diesel engines, with Programmable Controller	997XXPSC

## Compact Power Inverters

- Pure Sine Wave – safe for electronics and lithium-ion chargers
- 1,200W - 2,000W options
- Perfect for occasional and light/medium loads
- Runs most basic hand tools, chargers, and small appliances
- Single GFCI outlet built into unit



**NOTE.**  
Products shown on this page are not available for onsite install

Description	Part#
1,200W Pure Sine Wave Inverter with cabling & fuse	596XX1.2PI
Bluetooth Adaptor for 1,200W Inverter	596XXBD
Remote Switch for 1,200W Inverter	596XXRS
2,000W Pure Sine Wave Inverter with cabling & fuse	503XX2PI-HF
Remote Switch for 2,000W Inverter	503XXRS

## Heavy Duty Power Inverter/Charger Systems

- Designed for daily use in industrial applications
- 3,000W - 10,000W options
- Perfect for utilities, mobile workstations, and high-surge loads
- Hardwire only - configure with multiple outlets and shore power charging
- Bluetooth-enabled plus remote monitoring options



\*110V outlets and shore power inlet not included – call to configure

Description	Part#
3000W Pure Sine Wave Inverter/Charger* with cabling & fuse	596XX3PI
5000W Pure Sine Wave Inverter/Charger* with cabling & fuse	596XX5PI
Digital Remote Control Panel	596XXRC

## Auxiliary Batteries

- Enables inverter operation with vehicle off
- Provides reserve power for high-surge loads
- 100AH-460AH battery bank options
- Isolated from OEM battery for reliable starts
- Automatically charged via vehicle alternator or optional shore power



Description	Part#
100AH AGM Deep-Cycle Battery with Isolator and Battery Box	503XX1AB-B
200AH AGM Deep-Cycle Battery with Isolator and Battery Box	503XX2AB-B
Battery Monitor – Bluetooth enabled	596XXBMS

## Cantilever Series

- Most popular model
- 1300lb capacity
- Folds to allow rear door access while stowed
- 53"W x 60"L Load Area
- Built in cart stops

**NOTE.**  
Products shown  
on this page are  
not available for  
onsite install



Description	Part#
Low Roof Vans	989FX1CS**
MR/HR vans (except 148"WB EXT)	989FX2CS
148"WB EXT vans only	989F3XCS

\* Available on special order only  
\*\* This model has a shorter platform, load area is 53x40 instead of 53x60

## V2 Series

- 1100lb capacity
- Stores inside van
- 47"W x 49"L Load Area
- Built in cart stops



Description	Part#
Low Roof Vans	989FX1V2**
MR/HR vans (except 148"WB EXT)	989FX2V2
148"WB EXT vans only	989F3XV2

\* Available on special order only  
\*\* This model has a shorter platform, load area is 47x34 instead of 47x49

## Don't see what you're looking for?

Contact us to design a custom build, we love a challenge!



### Mobile Laboratory

**Challenge:** A manufacturer was looking to perform climate controlled hydraulic tool calibration onsite for their customers.



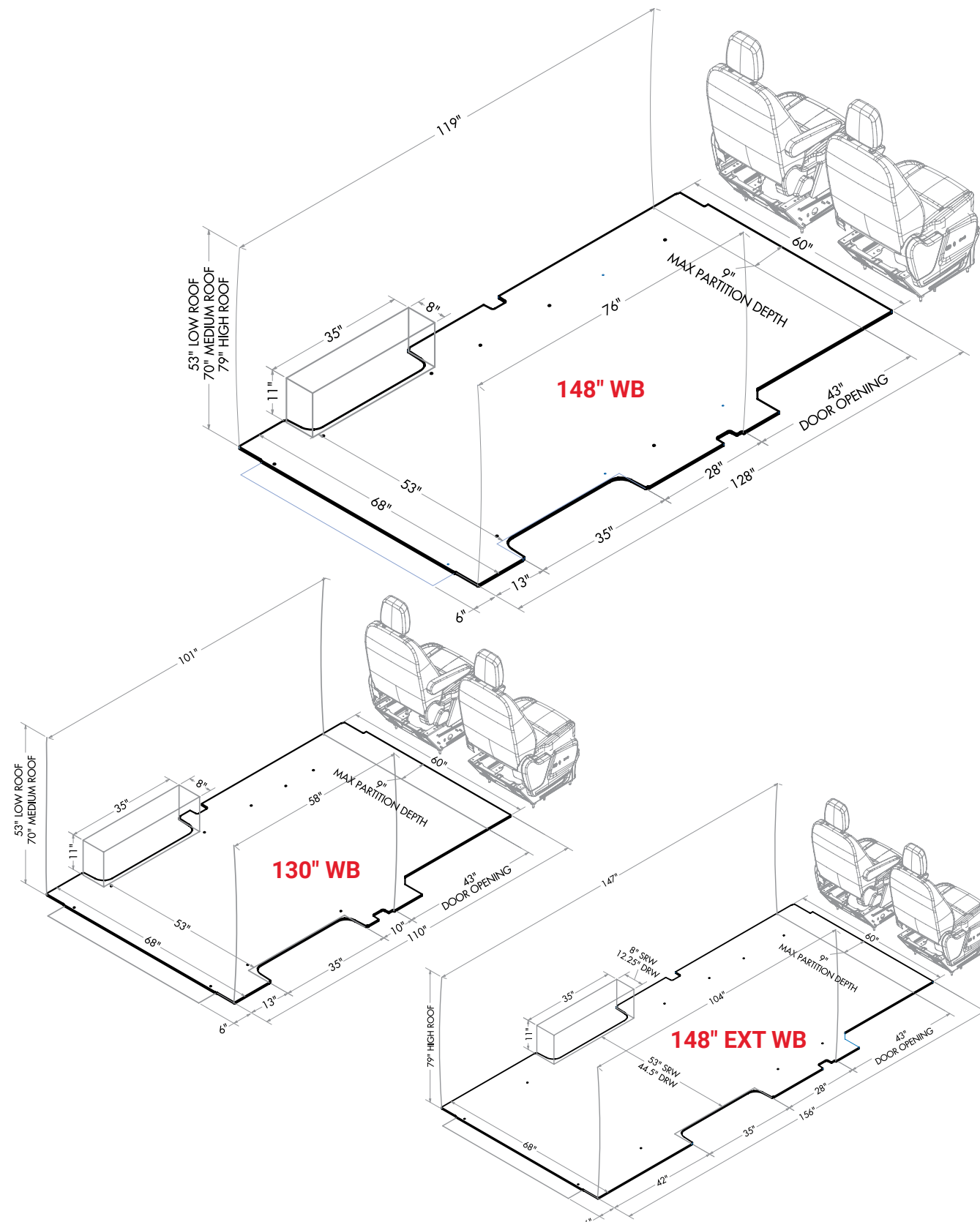
### Incident Command

**Challenge:** A regional OEM was looking to manage agency communications and radio distribution at major emergency scenes.



### Mobile Showroom

**Challenge:** A luxury stone & tile distributor was looking to grow their business by bringing their showroom to their clients.



# 7500+

## Vans Upfitted Per Year

### Your Transit Customizing Starts Here.

Let Advantage Outfitters make your van work ready!

**95%** Stock Orders Completed in 48 Hours or Less



*Serving the tri-state region*

New York • New Jersey • Connecticut • Pennsylvania

Contact Your Transit Dealer



**WEST**  
255 West Street  
South Hackensack,  
NJ 07606

**EAST**  
107 E. Hawthorne Ave.  
Valley Stream,  
NY 11580

[sales@advantageoutfitters.com](mailto:sales@advantageoutfitters.com)

866.925.4844

[advantageoutfitters.com](http://advantageoutfitters.com)